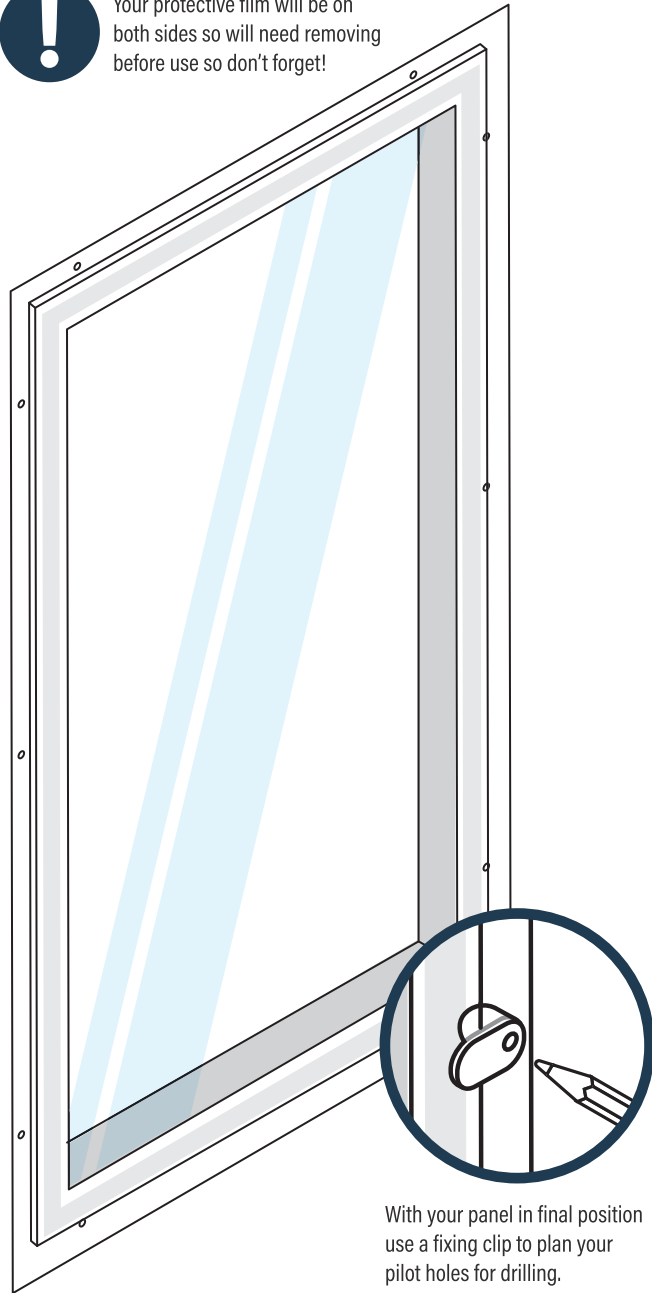




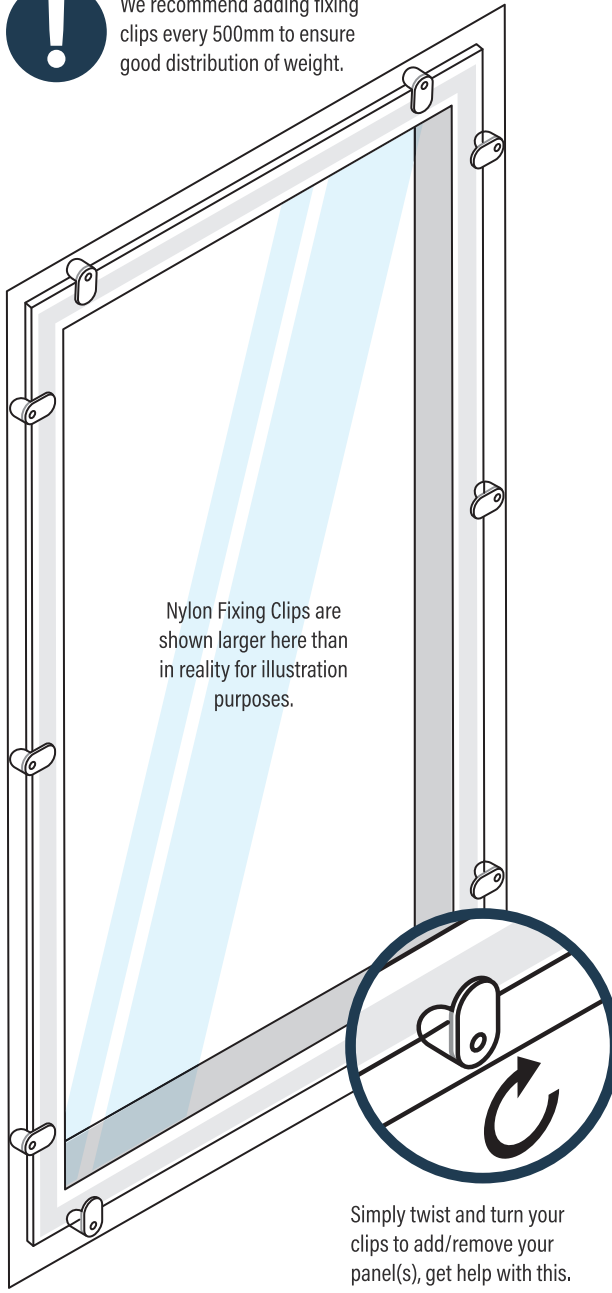
Your protective film will be on both sides so will need removing before use so don't forget!



With your panel in final position use a fixing clip to plan your pilot holes for drilling.



We recommend adding fixing clips every 500mm to ensure good distribution of weight.



Nylon Fixing Clips are shown larger here than in reality for illustration purposes.

Simply twist and turn your clips to add/remove your panel(s), get help with this.

Nylon Fixing Clips For 'Extreme' Secondary Glazing

Nylon Fixing Clips are used exclusively with our Extreme Double Glazing Kits. Sometimes when the panel size is large, over 4500mm perimeter; magnetic tape isn't enough and may need additional support as the panel(s) could drop off and break.

EASY INSTALL:

These clips simply screw into your window frame or window surround. Their design means they can be swivelled to secure or detach your panel(s) as needed.

WARMER WEATHER:

During the summer months when it can become quite hot consider taking down your panels as this can prevent unnecessary warping. If you take them down; clean and carefully store them somewhere flat until when the panels will be needed again.

FIXINGS:

Nylon Fixing Clips come in packs of 12 and we recommend adding fixing clips every 500mm to ensure good distribution and support for your oversize panel(s).

IMPORTANT - BUYER BEWARE:

For panels with a perimeter less than 4500mm, use 3mm acrylic with **Standard** tape. For panels with a perimeter greater than 4500mm, use 4mm acrylic with **Extreme** tape. For perimeters over 4500mm we recommend additional support (Nylon Fixing Clips) as magnetic tape alone will not be enough to support the panel which could potentially detach and break.



Copyright 2025 Barkstons Plastics. All rights reserved.

Our mailing address is: Barkston Plastics Ltd
221 Pontefract Lane Cross Green Leeds LS9 0DX

Visit us online at www.theplasticpeople.co.uk

